

# Alaska Department of Fish and Game

Habitat Section  
Southeast Region



**182-70-12000-2022-3011**

**ADDITION**

**Water body name:**

**Quad:** Yakutat B-3

**Upper Reach Latitude:** 59.453189 **Longitude:** -139.068208

**Lower Reach Latitude:** 59.452897 **Longitude:** -139.068948

**Findings:** We surveyed this uncataloged stream from the road using baited minnow traps and GPS and captured juvenile coho salmon (Figure 1). The stream is low gradient, the channel is poorly defined upstream of the road, and culvert is in poor condition (Table 1; Figures 2, 3).

**Recommendations:** Extend the upper extent of Stream No. 182-70-12000-2022-3011 in the anadromous waters catalog (Figure 4).

**Nomination:** Pending

**Survey date:** 9/15/2024

**Species & Lifestage:** CO

**Survey crew:** CD, FC

Table 1.—182-70-12000-2022-3011 addition survey data.

| Waypoint | Latitude  | Longitude   | Notes                                                                                                                          | Stream Width ft | Stream Substrate | Habitat Features | Gradient % | Sample Effort | Sample Results |
|----------|-----------|-------------|--------------------------------------------------------------------------------------------------------------------------------|-----------------|------------------|------------------|------------|---------------|----------------|
| 1249     | 59.453170 | -139.068256 | Minnow trap set upstream of 3 ft CMP, fully rusted, bottom falling out and pipe collapsing on both sides, especially at inlet. | 4-6             | Fine Organic     |                  | 1-2        | MT            | 29 CO          |



Figure 1.—Juvenile coho salmon captured at waypoint 1249.



Figure 2.–Culvert inlet at waypoint 1249.



Figure 3.–Culvert outlet at waypoint 1249.

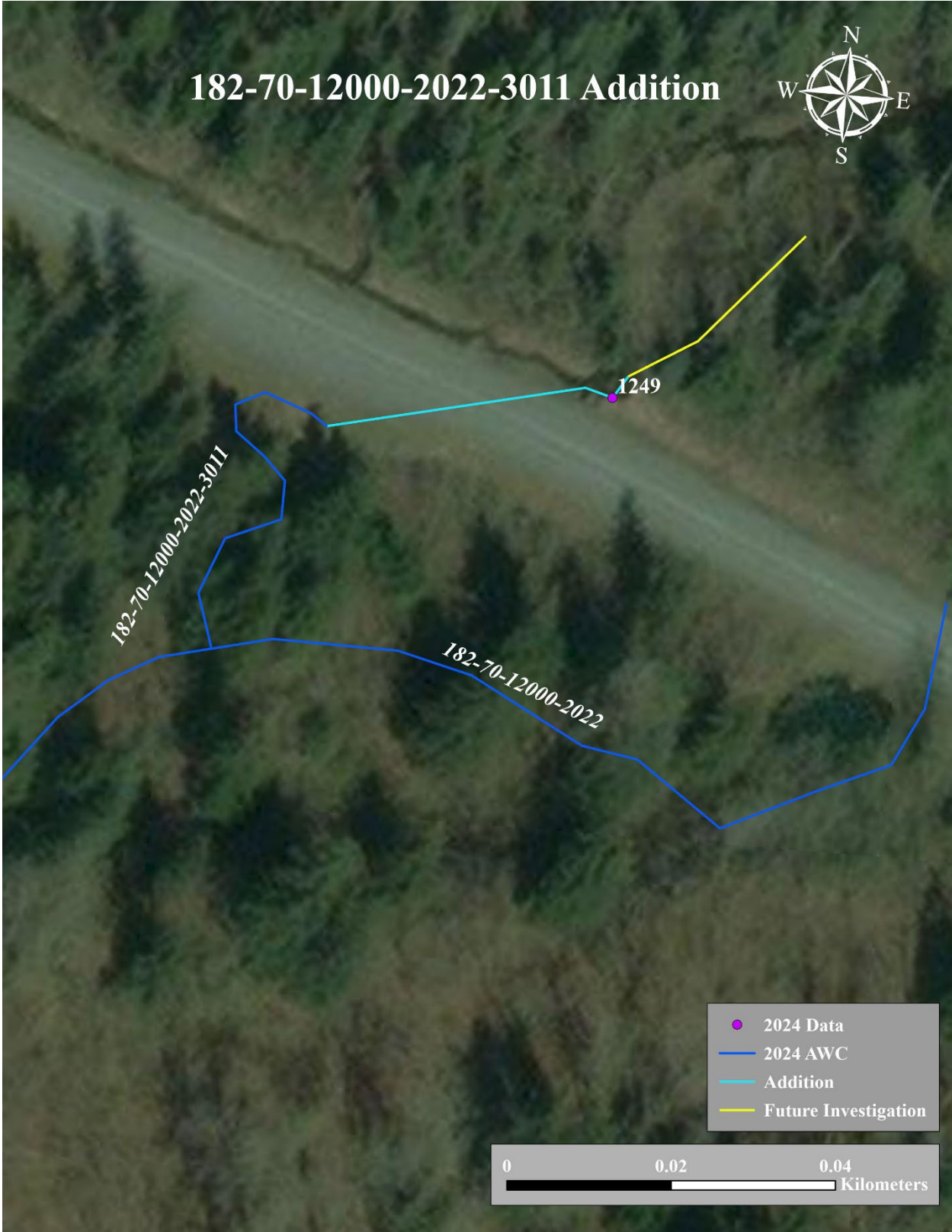


Figure 4.—187-70-12000-2022-3011 addition map.